

Pneumatic Innovations

Actuators | Valves | Networks | Filters |
Lubricators | Regulators | Accessories



ENGINEERING YOUR SUCCESS.



Parker valves cover the broadest range of market applications, from 10mm solenoid pilots for use in the semiconductor market, to 1-1/2" ported, hi-flow 4-way valves for foundries and paper mills. Utilizing technology such as the Wear Compensated Spool design, a wide range of network connectivity and collective wired control electronics, and specialized machining and thermoplastics, Parker offers value and quality on the leading edge of technology. Our transportation product offering includes valves that can operate in extreme temperatures, manual mechanical valves for transmission and trailer applications, and suspension control systems.

www.parker.com/pdn/networkconnectivity
www.parker.com/pdn/bodyportedvalves
www.parker.com/pdn/basemountedvalves

Network Control Systems

- Industrial Ethernet or IO-Link interface for H ISO, H Micro and Moduflex valves
- 7/8" power out
- Safe power capable
- Digital or analog



Flexible Valve Manifolds

- "Right Sizing" the size of each valve saves space and cost
- Moduflex series can mix valve sizes from 0.18 Cv to 0.80 Cv
- H ISO with Universal Manifold can mix valve sizes from 0.5 Cv to 6.0 Cv



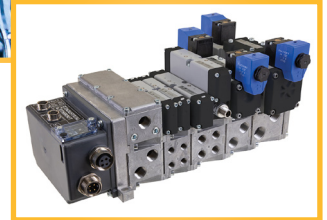
Micro Valves

H Micro Series

- 25-Pin
- 0.35 Cv, 282 to 510 nl/min
- 1.0 watt, 24VDC
- Back-to-back valve design
- Networks: EtherNet/IP™, Profinet IO, EtherCAT, IO-Link



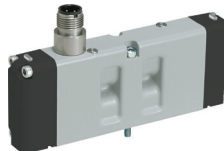
INNOVATIVE MANIFOLDS FOR THE FUTURE IN FACTORY AUTOMATION



Base Mounted Valves

H Series ISO

- 5°F to 120°F
- Available in five size ranges (Sizes 02, 01, 1, 2 and 3)
- Flow from 0.55 to 6 Cv



Moduflex

- Air piloted stacking valve
- .18 to .8 Cv
- 43-123 psig
- 5°F to 140°F
- Functions are 4/2, 3/2, and dual 3/2



Inline Valves

Viking Lite Series

- 0.8 to 2.5 Cv, 1/8" to 3/8"
- 14°F to 122°F
- 22 to 145 psig
- 1.2 to 2.5 watt
- 24VDC and 120VAC



Viking Xtreme Series

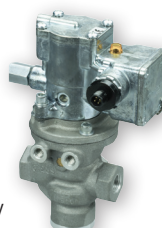
- 0.7 to 2.7 Cv, 1/8" to 1/2"
- -40°F to 150°F
- Vacuum - 232 psig
- 2.5 to 7.3 watt
- Hazardous duty, intrinsically safe
- 12VDC - 120VAC
- Rugged steel handles



High Flow Inline Valves

N Series

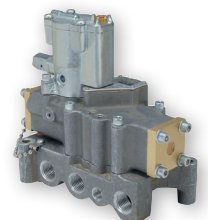
- 2 & 3-way high speed poppet valve
- 3/8" to 1-1/2", 3.0 to 30.0 Cv
- 30 to 250 PSI & vacuum
- NEMA 4, hazardous duty



High Flow Subbase Valves

Valvair II Series

- 4-way, 5 port
- 3/8" to 1" plug-in or direct pipe ported
- NEMA 4, hazardous duty



DURABLE ACTUATORS



Parker has a variety of durable actuators and cylinders to meet any application need. Constructed of high quality, corrosion-resistant material, Parker's Linear Air Cylinders meet rapidly changing application demands. Parker's Guided Cylinders are designed for heavy duty and extreme linear motion applications. Parker's Rodless Cylinders, including the Parker-Origa System Plus (OSP), offer flexible linear drives which can be simply and neatly integrated into any machine layout. From the P1X Series compact, high speed, no-lubrication cylinder to the complete OSP linear system with guidance and control modules; Parker has the Rodless Cylinder to suit the exact needs of individual installations.

www.parker.com/pdn/cylinders
www.parker.com/pdn/actuators

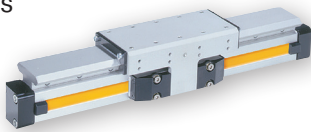
Rotary Actuators

Parker's Rotary Pneumatic Actuators include vane, single & double rack & pinion designs for light to heavy industrial applications. Parker has a rotary actuator which can be ordered with the industry's most extensive set of options for controlling and decelerating loads.

Rodless Actuators

OSP-P Series

- Linear guides
- 10mm to 80mm bore
- Active & passive breaks
- ATEX, clean room, low temp, high temp, slow speed, high speed



Guided Cylinders

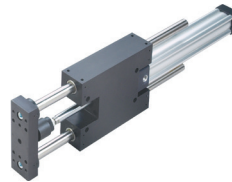
P5T Series

- Compact guided
- Designed for standard to heavy duty short-stroke applications
- Up to 145 psi
- Bore sizes range from 16-100mm with standard strokes from 10-200mm



HB Series

- Available in 3 models
- Compact thrust and reach
- Bore sizes from 20-63



P5E Series

- Low profile, light weight, standard duty guided assembly, powered by ISO cylinders
- Up to 145 psi
- Bore sizes from 32-100mm
- Rod lock & oversize rod options are available



Round Body Cylinders

SR Series

- 304 stainless steel cylinder body, non repairable construction
- Available with aluminum, delrin or stainless heads and caps
- Bore sizes 5/16" to 3"
- Single and double acting



ISO 1552 Tie Rod Cylinder

P1F Series

- Bore sizes 32mm through 125mm
- Magnetic piston standard
- Pneumatic cushions standard
- Optional rodlocks



P1D-G Series

- Bore sizes 32mm through 200mm
- Removable rod gland
- Chrome plated steel or stainless steel piston rod
- Single and double acting



P1P Series

- Bore sizes 20mm to 100mm
- ISO 21287 compact cylinder
- Chrome plated steel or optional stainless steel piston rod



NFPA Tie Rod Cylinders

4MA Series

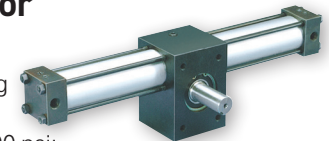
- Non lube NFPA cylinders
- Bore sizes 1.50" to 8.00"
- Extruded body design
- Optional rodlocks & guides



Rack and Pinion/Vane Rotary Actuator

PTR & PV Series

- Maximum operating pressure: 250 psi
- Output torque @ 100 psi: 39 lb-in to 2280 lb-in
- Standard rotations: 90°, 180°, 270°, 360°, 450°
- Maximum breakaway pressure: 5 psi



PARKER'S ACTUATOR LEAD TIME PROGRAM

Unplanned downtime can have a devastating impact on a facility's overall productivity and profitability. Parker Pneumatic Division's Actuator Lead Time Program offers **SAME DAY SHIP** to make sure your operations stay up and running to avoid unplanned downtime costs. This program offers same day configured options to meet your immediate actuator needs. For more information, visit www.parker.com/pdn/actuatorleadtimes

FILTERS, REGULATORS AND LUBRICATORS

AIR PREPARATION



Parker is the industry leader in air preparation. Our product portfolio contains filters, regulators, filter/regulators and lubricators. Accessories include lockout valves, manifold blocks, safety exhaust valves, soft start/quick dump valves, electro-pneumatic regulators and pressure switches.

www.parker.com/pdn/airprep

Modular FRLs

Global FRL Series

- Port size: 1/4" to 3/4" (NPT, BSPP & BSPT)
- 300 psig max
- -13°F to 150°F
- Particulate & coalescing (5, 1 and 0.01 micron), adsorber



Electronic Proportional Regulators:

P31P Mini and P32P Compact

- Micro parameter settings and selectable I/O parameters
- Quick, full flow exhaust
- LED display indicates output pressure
- No air consumption in steady state
- Protection to IP650



P31D and P32D Dump Valves

- Port size: 1/4" or 1/2" (NPT, BSPP & BSPT)
- Solenoid or air pilot options
- High flow & exhaust capability
- Silencer included



P31S and P32S Soft Start Valves

- Port size: 1/4" or 1/2" (NPT, BSPP & BSPT)
- Adjustable slow start, high flow
- Solenoid or air pilot options



P3Y Series

- Port size: 3/4" to 1-1/2" (NPT, BSPP)
- Particulate & coalescing (5 and 0.01 micron), adsorber
- 250 psig max
- -40°F through 140°F
- Metal bowl/modular construction
- Pilot operated/proportional regulator



Parker Pneumatic Division offers a 5-year extended warranty on all pneumatic components providing they are correctly installed and protected by Parker pneumatic filters which are properly maintained.



Components covered by this warranty include all cylinders, valves, and pneumatic automation components manufactured by Parker in any of our global facilities.

Non-Modular FRLs

PrepAir II

- Compact & standard
- Port size: 1/4" to 3/4"
- 300 psig max
- -4°F through 175°F



14 Series

- Port size: 1/8" to 1/4"
- -4°F to 175°F
- 300 psig maximum
- Ideal for OEM applications



Barstock FRLs

- Port size: 1/8" to 3/8"
- -4°F through 175°F
- Non-modular construction



Regulators

- Port size: 1/8" and 1/4"
- 300 psig max
- -40°F to 180°F
- Precision Regulator
- General Regulators
- Water Regulators



Dial Air

- Port size: 1/4" to 2" (NPT, BSPP)
- Non-rising, pressure-adjustment dial
- Self-relieving, full pressure adjustment in less than one turn
- Recommended for pilot-air applications
- Constant bleed, piston operated



Stainless Steel FRLs

- Port sizes: 1/4" and 1/2"
- 300 psig max
- -40°F to 180°F
- Stainless steel construction handles most corrosive environments
- Meets NACE specifications MR-01-75/ISO 15156



General Industrial FRLs

- Port size: 1" to 1 1/2"
- 300 psig max
- 32°F to 212°F
- Filters, regulators and lubricators



Bulk Liquid Separators

- Port size: 1/4" to 2"
- 232 psig max
- 35°F to 175°F
- High liquid removal efficiencies at all flow conditions, low maintenance



MACHINE SAFETY



While accidents do happen, they can almost always be prevented. Parker offers safety-rated components and products suitable for use in (SRP/CS) safety-related parts of a control system. These components are designed to be integrated into safety circuits to reduce the risk of injury in machine design.

www.parker.com/pdn/machinesafety

Safety Exhaust Valves

P33 Series

- Designed to exhaust trapped air by a controlled means (input signal) or through monitoring of the control system (fault detection)



Pilot Exhaust Module

PXM Series

- Controls pilot pressure to valve with pressure feedback to PLC



Spool Sensing

HA Series

- Sensing of spool position with feedback to PLC



Lockout Tag Out Valves

EZ Series

- Allows manual exhaust of system pressure and lockout capability



FULL LINE OF ACCESSORIES

To complement its pneumatic product offerings, Parker has a complete line of accessories, including vacuum generators and cups, grippers, dryers, flow control valves, breather vents and more. | www.parker.com/pdn/accessories

Refrigeration Dryers

- Space saving plug-n-play design
- SPS refrigeration to remove condensate & maintain dew points
- 15 to 250 SCFM
- Up to 232 psig inlet
- Up to 149°F inlet temp & 122°F ambient



Regenerative Desiccant Dryers

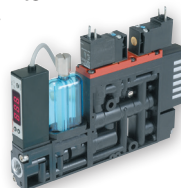
- Point of use application
- Noise less than 70 dba
- IP66 / NEMA 4
- 40 to 800 SCFM
- 115VAC



Vacuum Generators

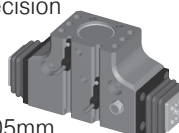
MC72 Series

- Degree of vacuum: up to 27 inHg
- Integrated sensor and filter
- N.O or N.C. air supply
- Blow-off with check valve
- 24VDC
- Manifold options



Precision Grippers

- Premium product for precision and durability
- Parallel: 2 or 3 Jaw
- Grip forces to 35,000
- Repeatability to +0.00005mm

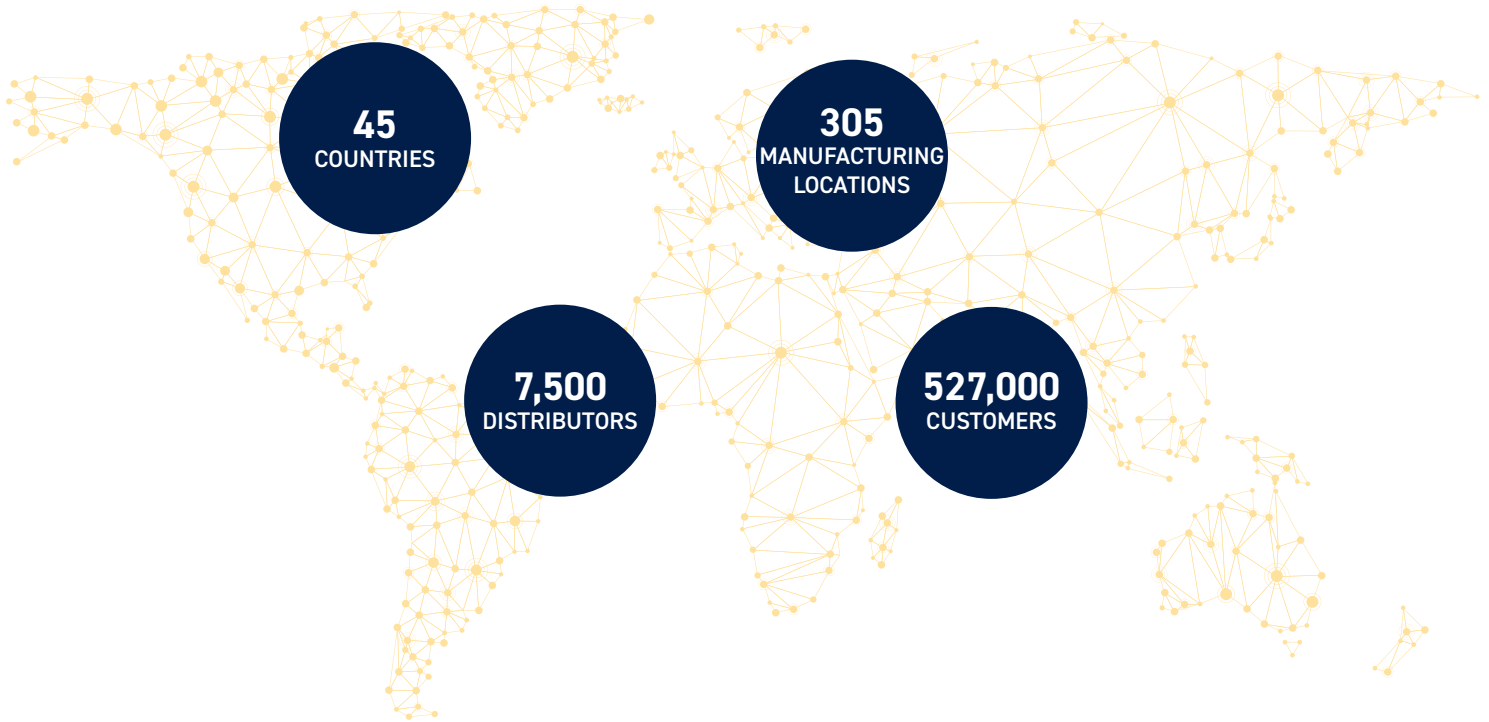


Continuous Position Sensing

- IO-Link communication with M12 connector
- No modification to the actuator
- Analog version with M8 connector
- 5 sizes with sensing ranges from 32 mm to 256 mm
- IP67 design suitable for any industrial application
- Yellow teach button for easy set-up



Parker has the **largest global distribution network** in motion and control.



The Pneumatic Division designs, assembles, and manufactures products at our five North American manufacturing locations. We partner with distributors and OEMs to optimize component selection and reduce total cost of ownership, to help engineer your success. **Local distributor services:**

- Inventory & inventory management
- Technical support
- Product & technology training
- Air consumption surveys
- Pneumatic manifold assembly and test
- Product conversion
- Component kitting
- Bin stocking
- Sub-assemblies of standard components
- Summary billing



Scan the QR code to find a distributor near you.



Virtual Engineer

Virtual Engineer is an innovative design tool for Parker pneumatic products. Easily size and select the correct type of pneumatic products to suit your application.

Save engineering time with three simple steps:

1. Enter application details using the intuitive interface
2. Size and select products that meet the demands of your application
3. Get a quote, CAD, share your project, and download files easily

Meet your virtual engineer at www.parker.com/virtualengineer



Parker Hannifin Corporation

Pneumatic Division

8676 E. M89

Richland, MI 49083 USA

Tel: 269 629 5000

Fax: 269 629 5385

Web: www.parker.com/pneumatics